

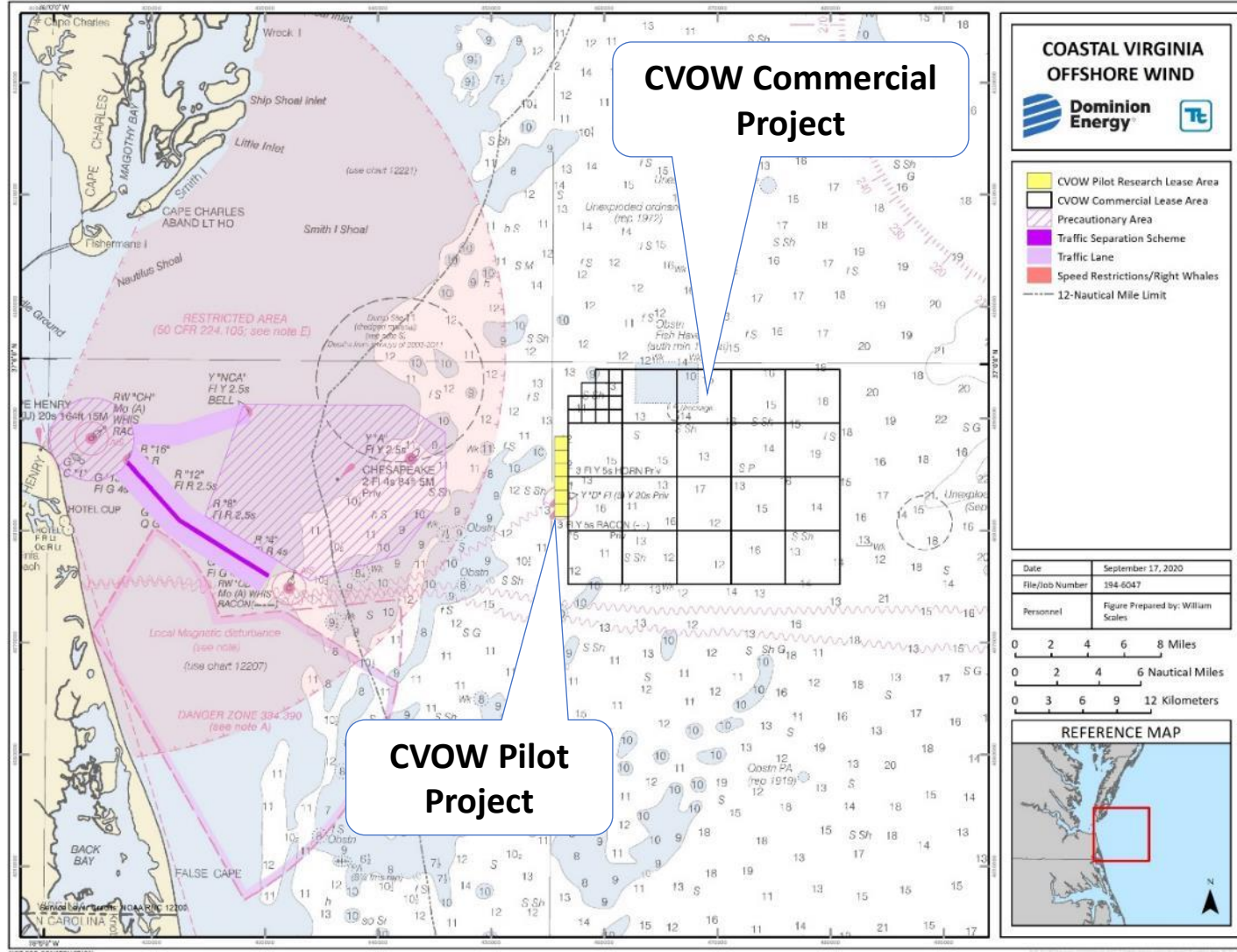


Coastal Virginia Offshore Wind



VMRC Meeting
NOV 18, 2021

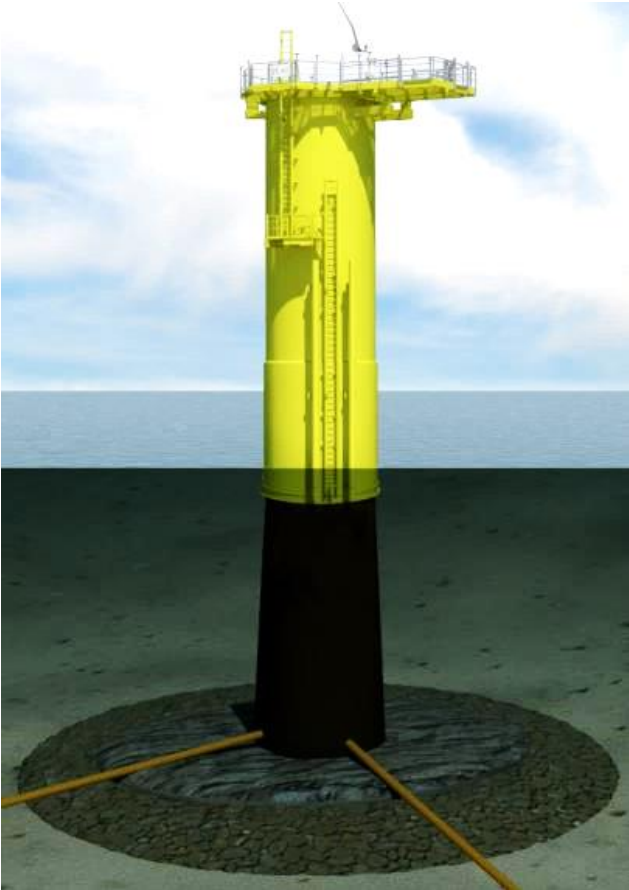
Coastal Virginia Offshore Wind (CVOW) Overview



- **Two 6-megawatt wind turbines; approximately 600 feet tall**
- **12-megawatt total capacity; enough to power up to 3,000 homes**
- **First offshore wind project installed in federal waters**
- **Designed to inform development of commercial project and the offshore wind industry as a whole**



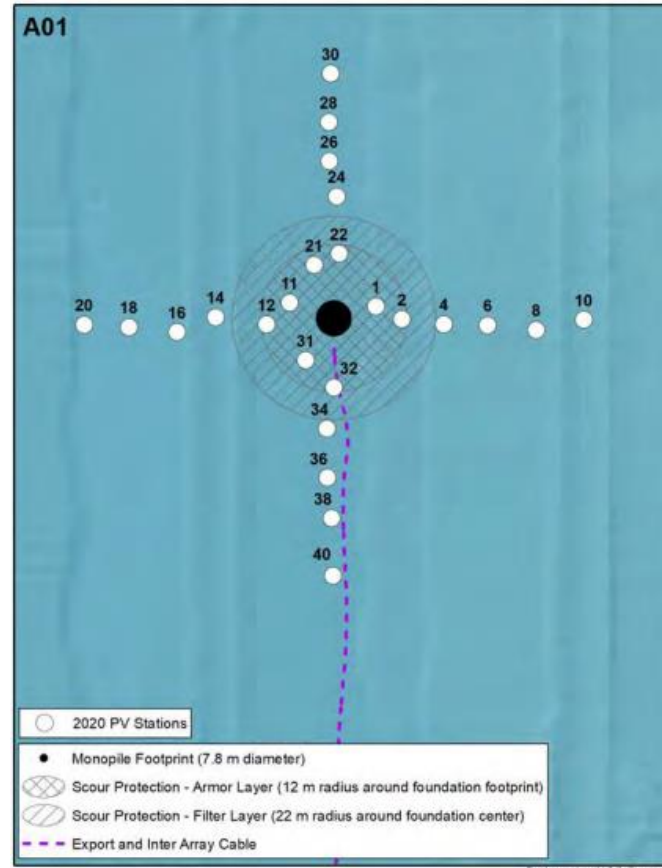
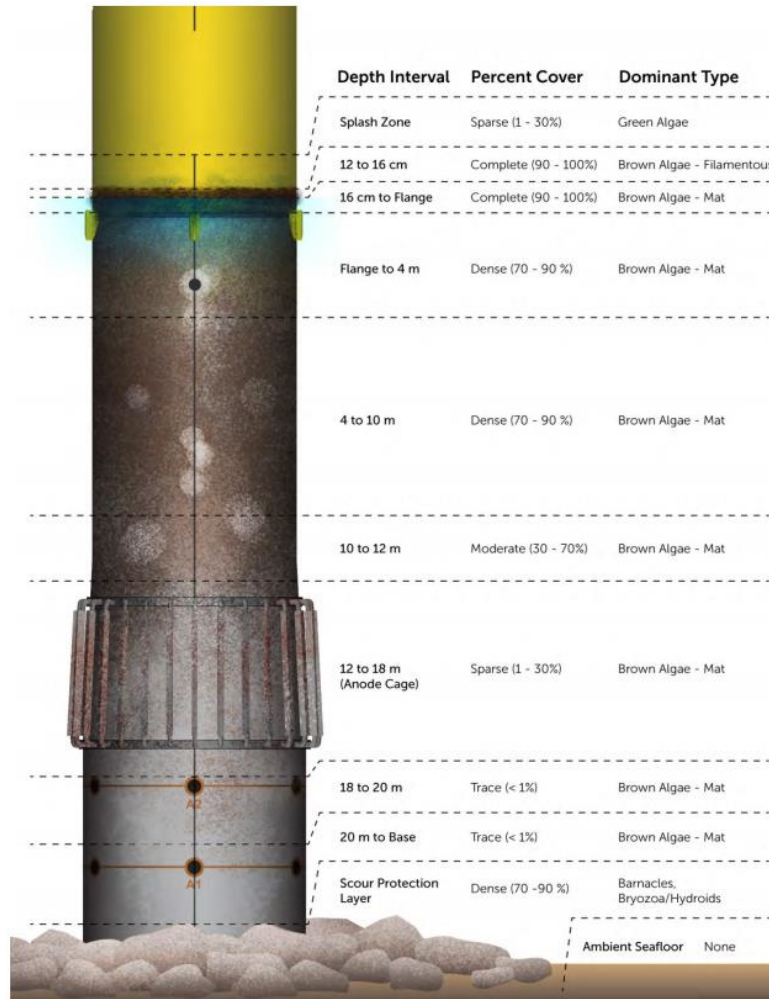
CVOW Pilot Foundation Scour Installation & Surveys



- Initial crushed rock layer, ~72 ft radius
- 2nd layer (armor layer), ~39 ft radius, larger rock deployed over the initial layer after the monopile is installed
- The armor layer consists of larger rock material (80 to 400 lbs)
- Visual surveys and multibeam sonar surveys are conducted periodically.



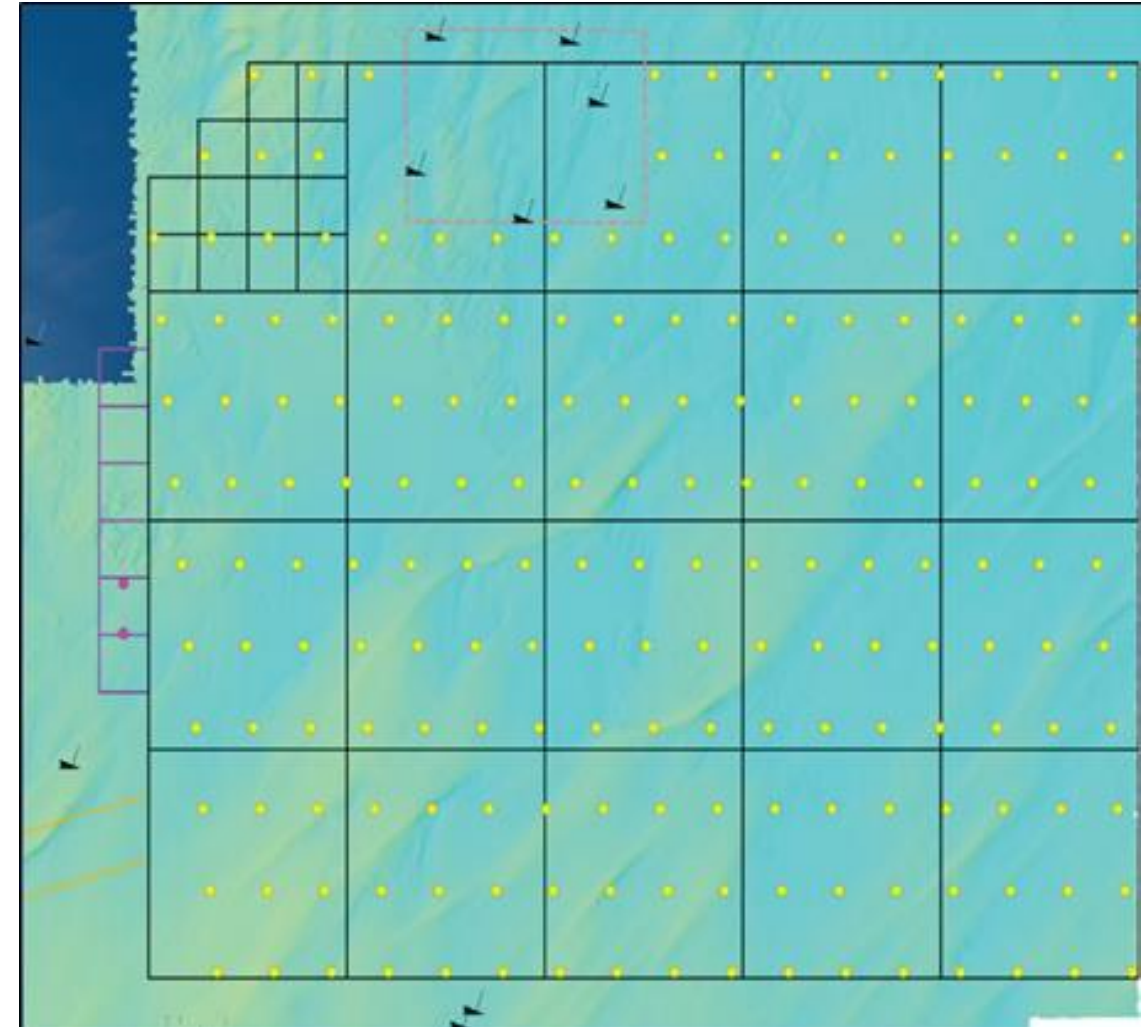
CVOW Pilot Foundation Survey Results



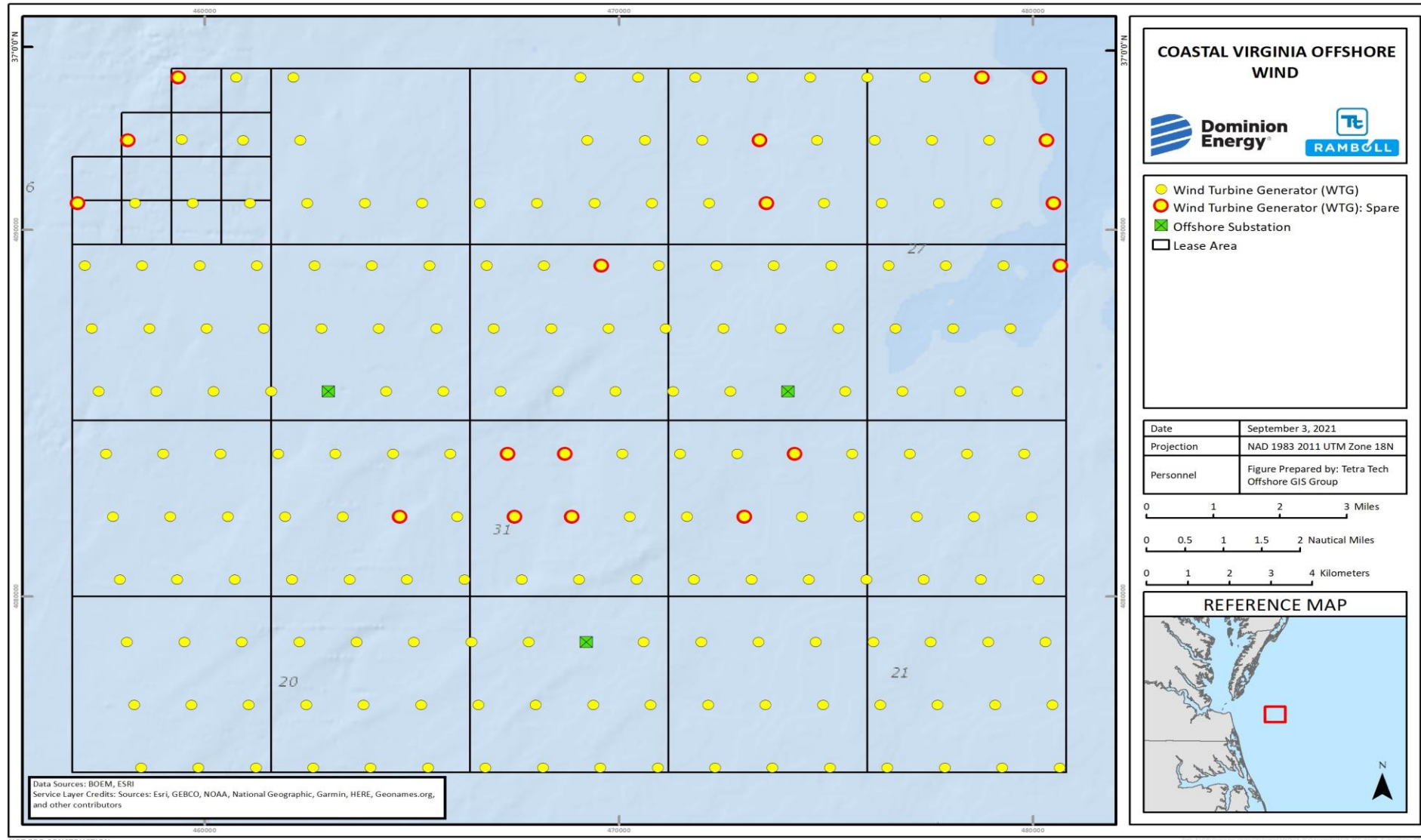
Common Name
Atlantic Spadefish
Chub Sp.
Black Sea Bass
Cunner
Greater Amberjack
Grey Triggerfish
Pilotfish
Scup
Spotfin Butterflyfish
Rainbow Runner
Summer Flounder (Fluke)
Unidentified Squid Sp.

CVOW Commercial Overview

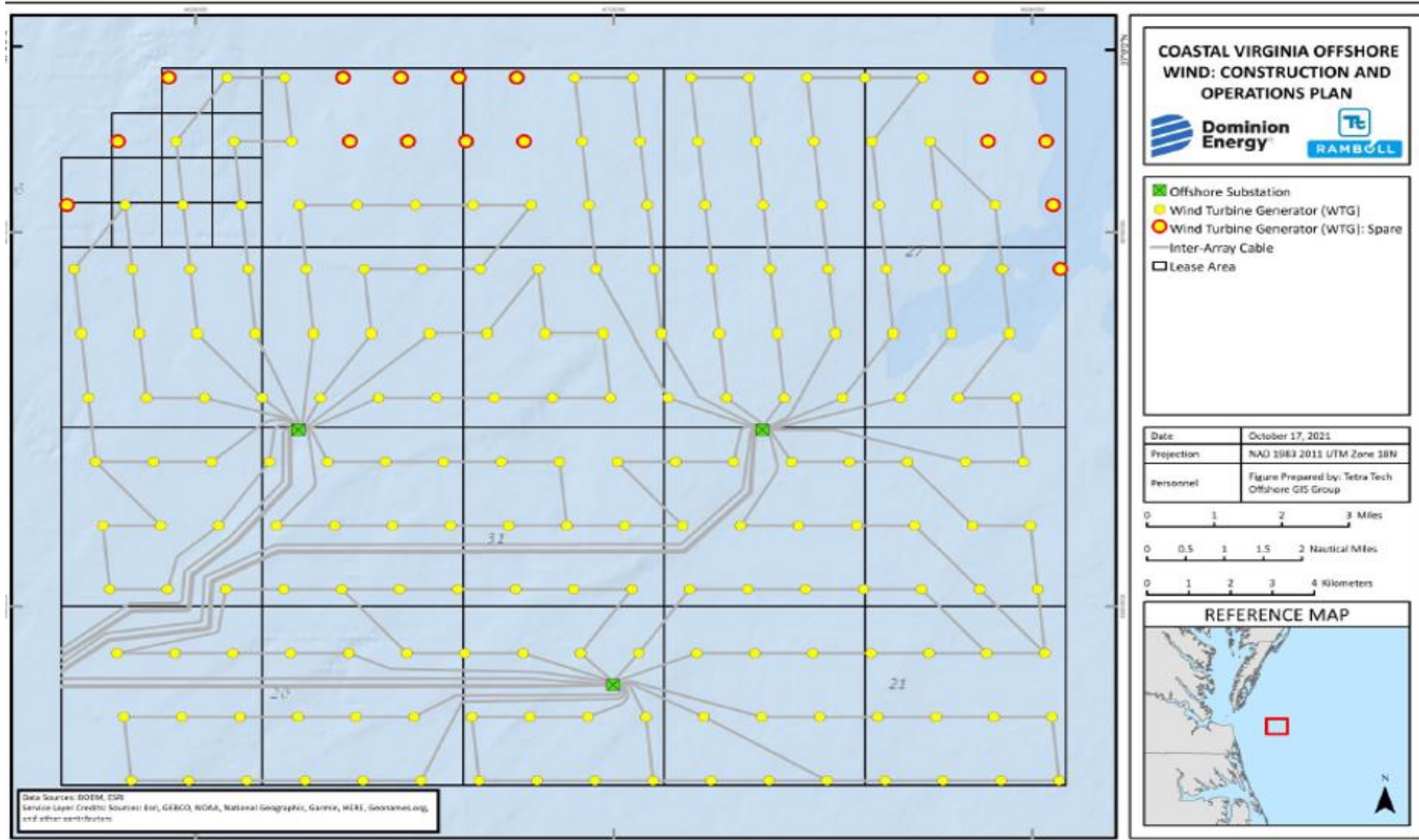
- Lease area is approximately 112,800 acres
- Planning for 176 14-megawatt turbines; total estimated capacity of 2.6-gigawatts, enough to power up to 660,000 homes
- Turbines are ~800 feet tall with spacing currently planned at 0.75 nm x 0.93 nm
- Once complete, it will be the largest offshore wind project in United States



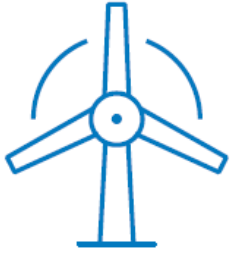
The Updated Commercial Project Spacing



The Updated Commercial Project Spacing



Offshore Components



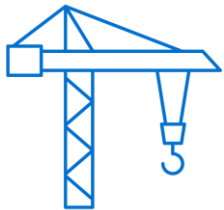
Wind Turbines

- 176 positions
- 14MW SGRE wind turbine
- Up to 869 feet tall



Inter Array Cable

- Total length up to 300 miles
- Up to 7.9 inches in diameter
- Buried up to 9.8 feet beneath the seabed



Foundations

- Monopiles for Wind Turbines
- Open Jackets for Offshore substations



Export Cable

- Nine 230 kV Circuits
- Total length up to 417 miles
- Up to 11.4 inches in diameter
- Buried up to 16.4 feet beneath the seabed



Offshore Substations

- Up to three offshore substations
- Up to 1,000 MW
- 66kV to 230kV step up

CVOW Commercial Expected 'On-Water' Timeline



April 2020 to June 2021	Geophysical and Geotechnical (G&G) Surveys
Fall 2021	Deployed Metocean data collection buoy in Lease Area
2022 (Dates TBD)	Unexploded Ordinance (UXO) Investigation Survey
2023 (Dates TBD)	Unexploded Ordinance (UXO) Identification Survey
Late 2021 to 2023	Pre-Construction Survey Activity (as required)
May to October 2024	Construction - Monopile Installation
November 2024 to April 2025	Construction – Wind Turbine and Cable Installation
May to October 2025	Construction - Monopile Installation
November 2025 to April 2026	Construction – Wind Turbine and Cable Installation

- Mariner Updates and a complete list of FAQs can be found on the Coastal Virginia Offshore Wind webpage (www.coastalvawind.com); some mariner related FAQs include:
 - How and why was this location chosen?
 - Will fishermen be able to continue fishing in the lease area?
 - How is Dominion Energy addressing navigational safety?
 - Are there any Electromagnetic Field (EMF) impacts from cables?
 - Are there any fisheries resource studies being conducted?

Thank you!

Contact Us:

Kevin Carroll - Dominion Energy
Sr. Construction Project Manager
kevin.m.carroll@dominionenergy.com

Jerry Barnes – Dominion Energy
Marine Affairs Manager
jerry.r.barnes@dominionenergy.com

Ron Larsen – Sea Risk Solutions
Fisheries Liaison
ronlarsen@searisksolutions.com

General Information
<https://coastalvawind.com/>
info@coastalvawind.com
1-844-319-2065